

# Achieving SDG 16: Building community resilience and strong indigenous peoples' institutions

## UNPFII20 Side Event

### **EXPERIENCE FROM CHITTAGONG HILL TRACTS, BANGLADESH**

*Presented by*

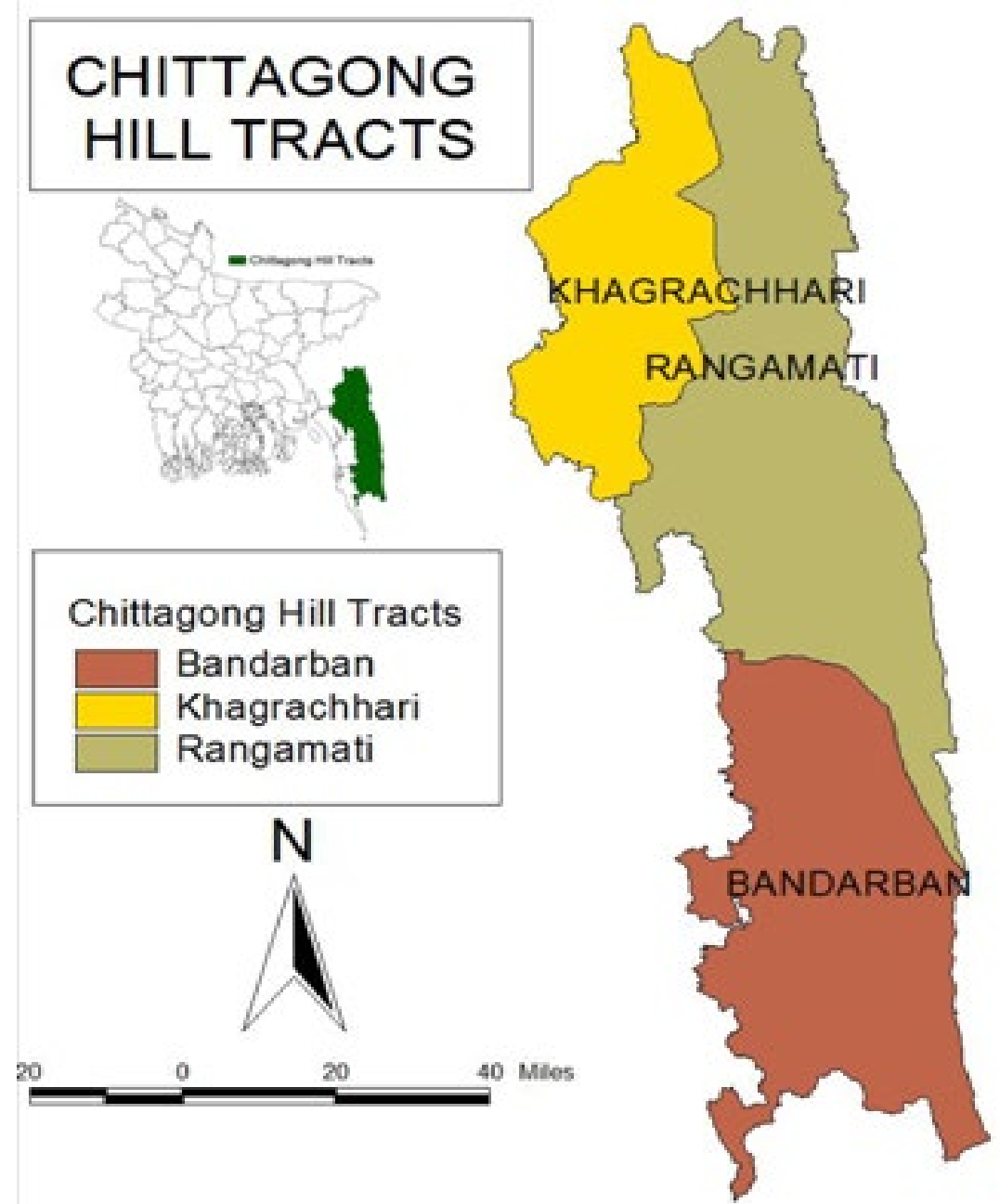
**Mrinal Kanti Tripura**

**Director of Maleya Foundation**

**20 April 2021**



# BACKGROUND OF CHITTAGONG HILL TRACTS (CHT)





INDIGENOUS PEOPLES OF  
CHITTAGONG HILL TRACTS





INDIGENOUS PEOPLES OF  
CHITTAGONG HILL TRACTS



Colorful Mro Dance



Celebration of New year

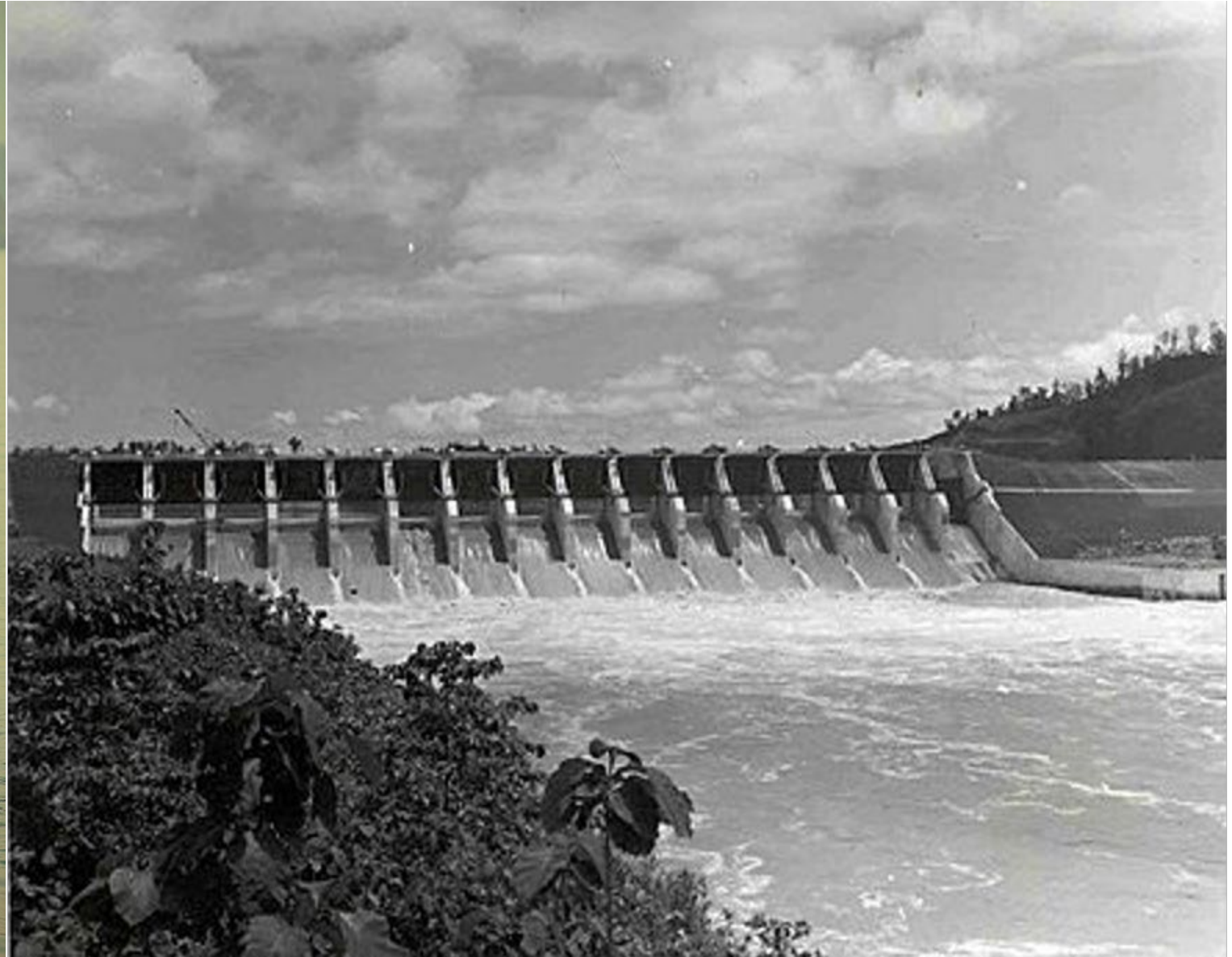


Kherebai Dance of Tripura People



# DISCRIMINATION, INJUSTICE & MARGINALIZATION OF INDIGENOUS PEOPLES OF CHT

Kaptai Dam constructed in 1960s





# ARMED STRUGGLE FOR THE RIGHTS TO SELF-DETERMINATION





# DIALOGUES & SIGNING OF THE CHT ACCORD BETWEEN THE GOVERNMENT AND THE PARBATYA CHATTAGRAM JANA SAMHATI SAMITI (PCJSS)

Chittagong Hill Tracts  
Accord signed on the 2<sup>nd</sup> of  
December in 1997 after 26  
dialogues!



# MALEYA FOUNDATION'S WORKING APPROACH

2003 to now

IP's Sustainable  
and Self-  
Determined  
Development  
(IPSSDD)

2005 to now

Conflict  
Sensitive  
Development/  
Do No Harm  
Approach

2008 to now

Conflict  
Transformation  
Approach



# MALEYA FOUNDATION & INDIGENOUS PEOPLES DEVELOPMENT

- Peace Accord 1997 opened up potential opportunities for the CHT IPs.
- However, effective participation, recognition & respect of IP's knowledge, sensitivity toward indigenous culture and recognition of IP rights remain the main challenges.
- Maleya began in 2003 working for the Indigenous Peoples' Sustainable and Self-Determined Development (IPSSDD).



# MAINSTREAMING CONFLICT SENSITIVITY WITHIN MALEYA & PARTNERS BY

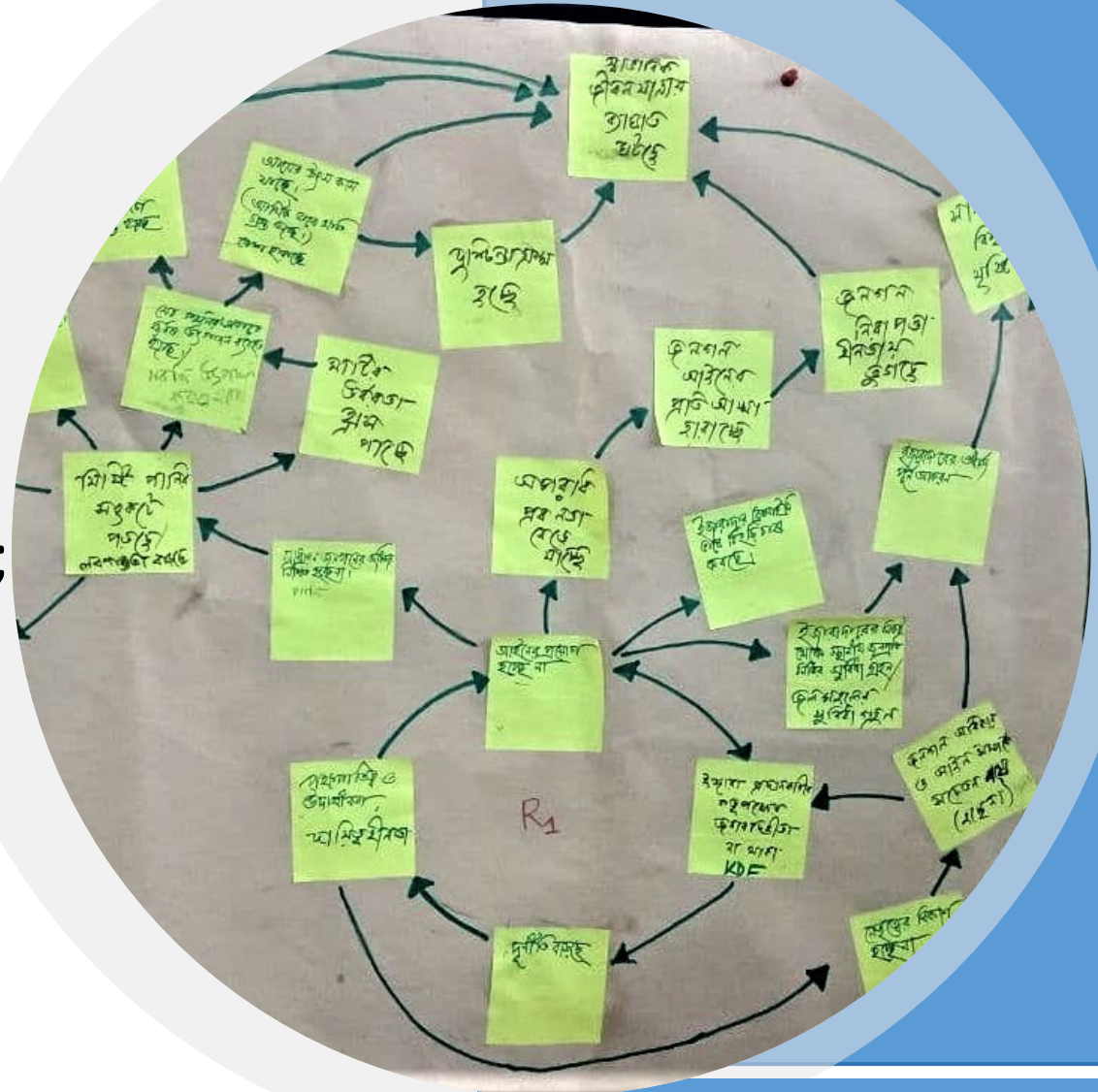
- Developing Maleya's capacities & mainstreaming Local Capacities for Peace (LCP) within organizational systems (i.e. in PME);
- Learning from experienced organizations and networks through exposure visits;
- Orientation/training of youth, women, civil society activists & partners on conflict sensitivity;





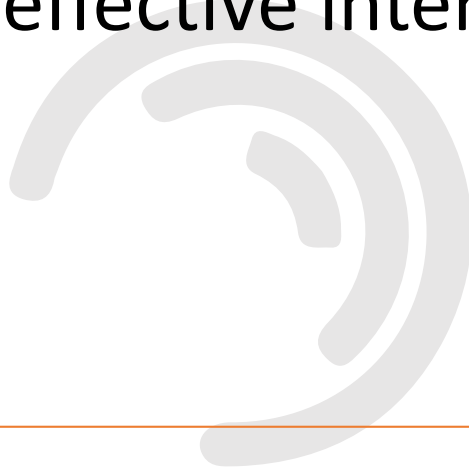
# CONFLICT TRANSFORMATION APPROACH

- Building organizational capacities on conflict analysis & using Systemic Conflict Analysis, Reflecting on Peace Practice tools;
- Developing programmes/ intervention strategies to change conflict dynamics;
- Working with different stakeholders including youth, women and civil society groups at local to global level;
- Formation/strengthening of IP institutions



# CONFLICT TRANSFORMATION APPROACH ENABLES

- the perception of the wider picture of conflict;
- the identification of the positions, interests and needs of the conflicting parties and
- the identification of the key driving factors/the leverage and entry points for effective interventions.





# KEY LEARNING

- IPSSDD is more effective and sustainable if conflict sensitivity and the conflict transformation approach is integrated;
- It is important to understand conflict dynamics to make effective interventions;
- Multi-faceted and multi-stakeholder strategies are important to transform the culture of violence;
- Inter-generational dialogue processes are essential to change perceptions and attitudes;
- Gender based violence is a powerful entry-point to work across the social divide;



# KEY RECOMMENDATIONS to achieve SDG16 TARGETS

- IP organizations, state and development actors should **integrate conflict sensitivity and the conflict transformation approach** for the development and wellbeing of society;
- Government should **provide necessary support and be inclusive of IPs organizations for mainstreaming and developing necessary knowledge and skills** about the conflict transformation approach;
- Governments should provide **space and a favorable environment and increased safe democratic and civil societies for IPs to build strong institutions for sustainable development.**







**“Dialogue and collaboration can prevent violent conflict and promote peaceful solutions.”**

John Paul Lederach and  
Michelle Maiese

**THANK YOU**

---